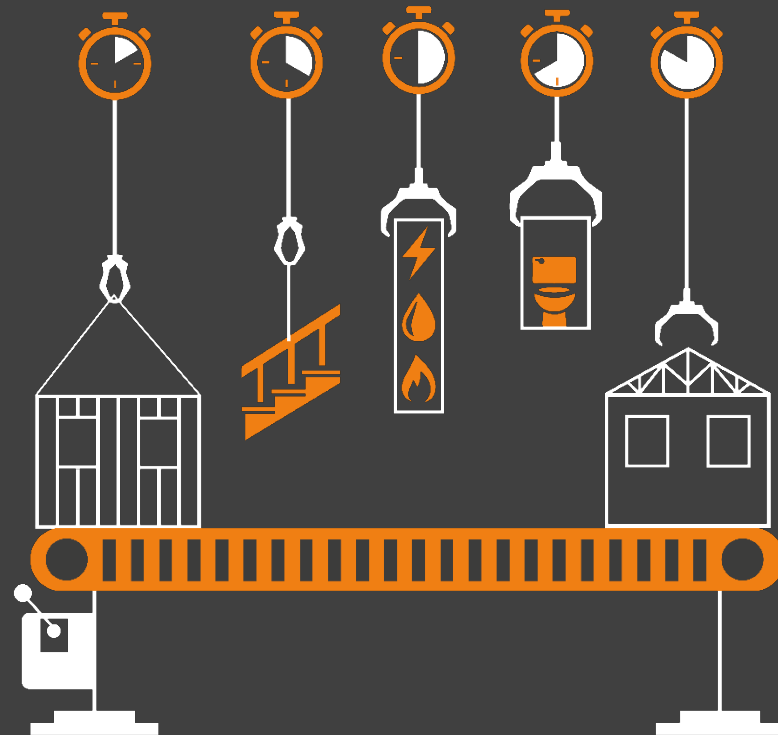
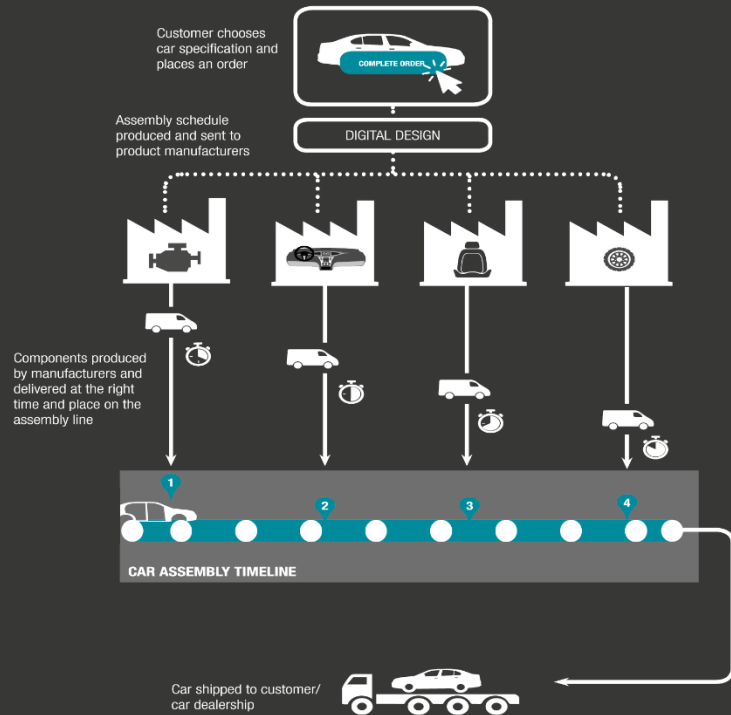


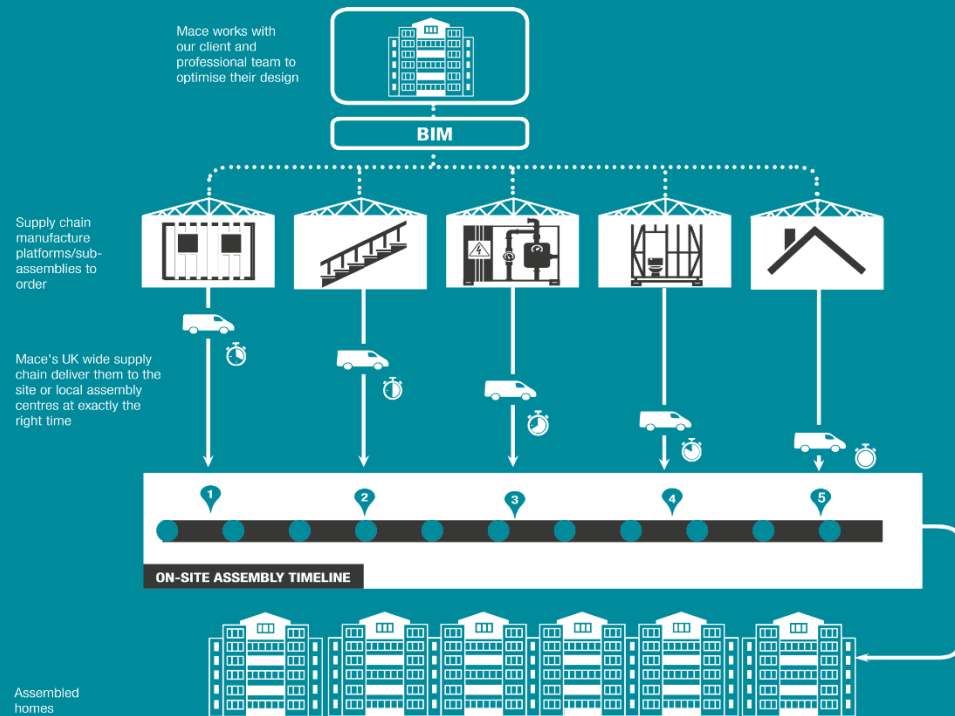
An Introduction to Mace Tech



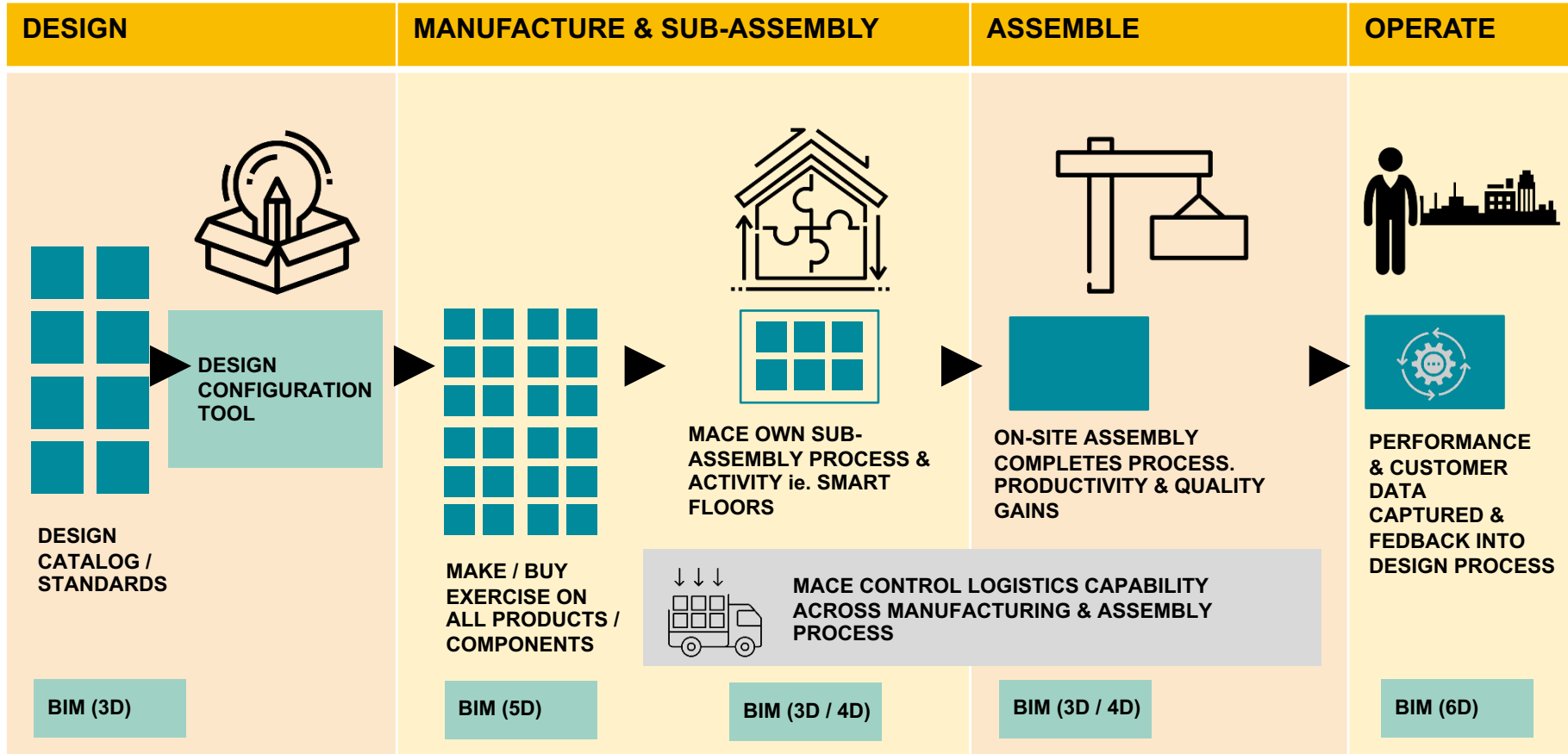
'JUST-IN-TIME' CAR MANUFACTURING



'JUST-IN-TIME' HOUSE BUILDING



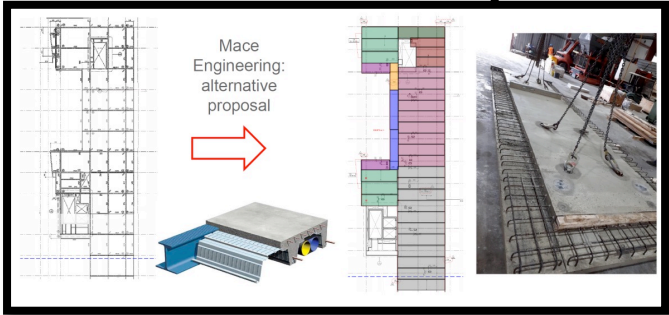
Why do this



How we do this - Product and process development



STAGE	INVESTIGATE BRL / TRL 1-3			DEVELOP BRL / TRL 4-7				EMBED BRL / TRL 8-9	
TRL /BRL	1	2	3	4	5	6	7	8	9
	Idea / need	Design concept	Proof of concept	Factory test	Site environment test	Whole project test	Multiple project test	Business mobilisation	Benefit tracking



N08 – East Village, London



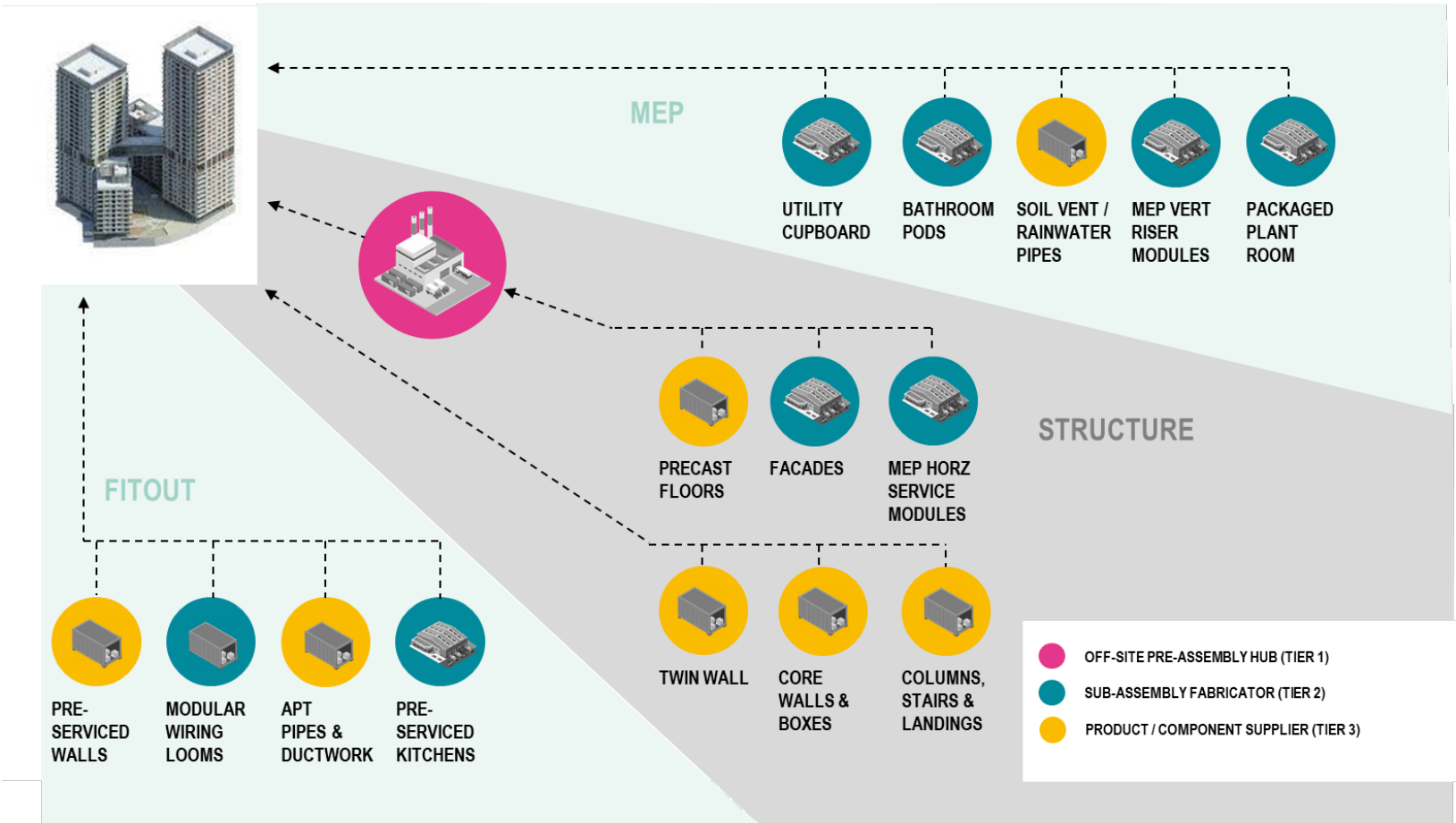
Inside the Jump factory @ N08

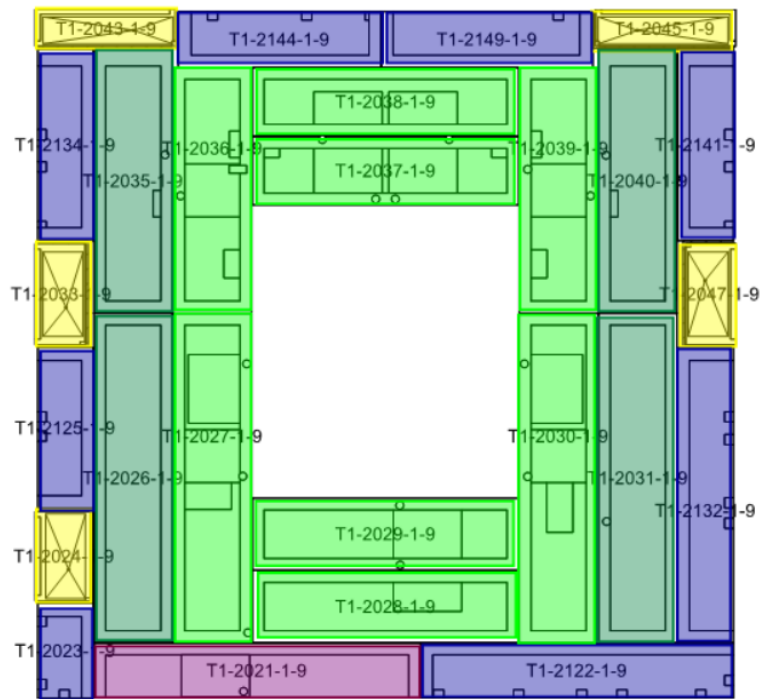
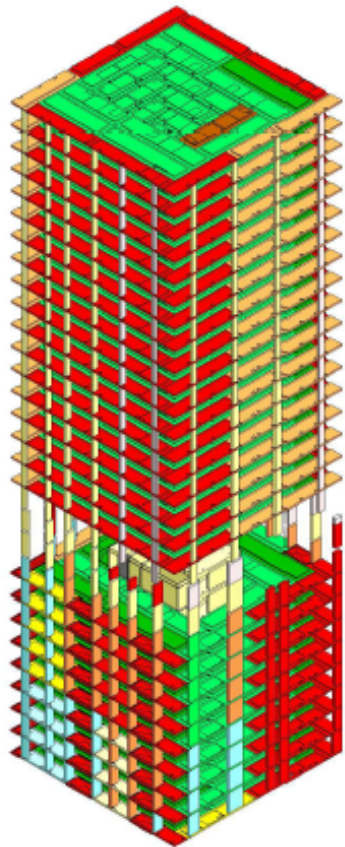


N06 – East Village, London

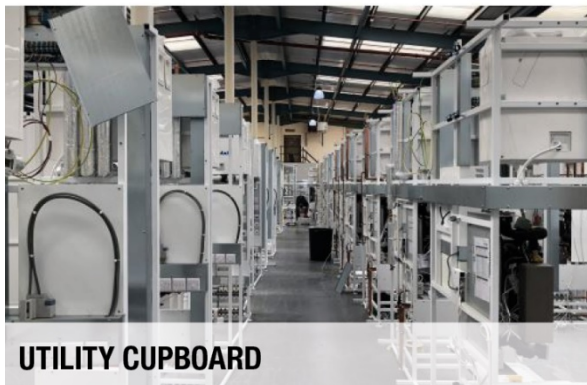
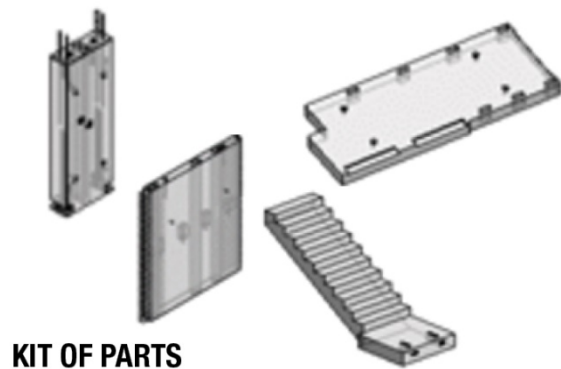


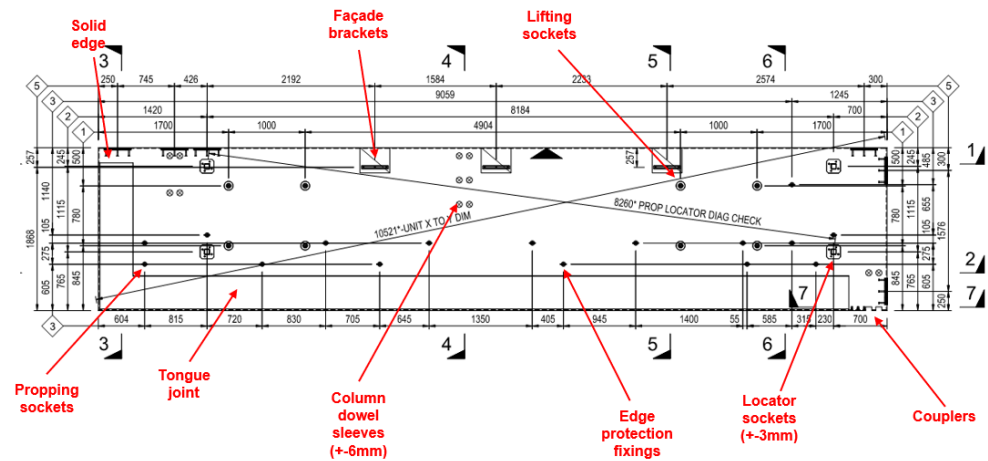
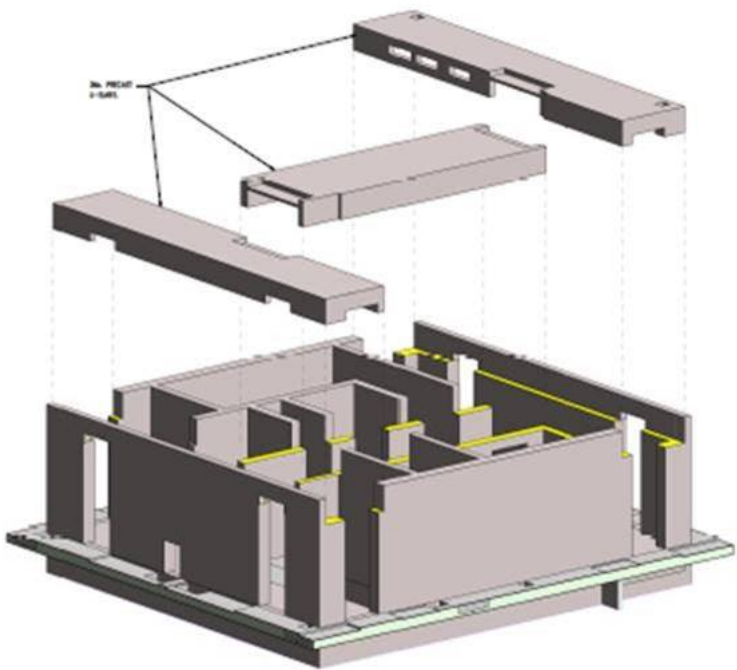
N08 – Delivery strategy

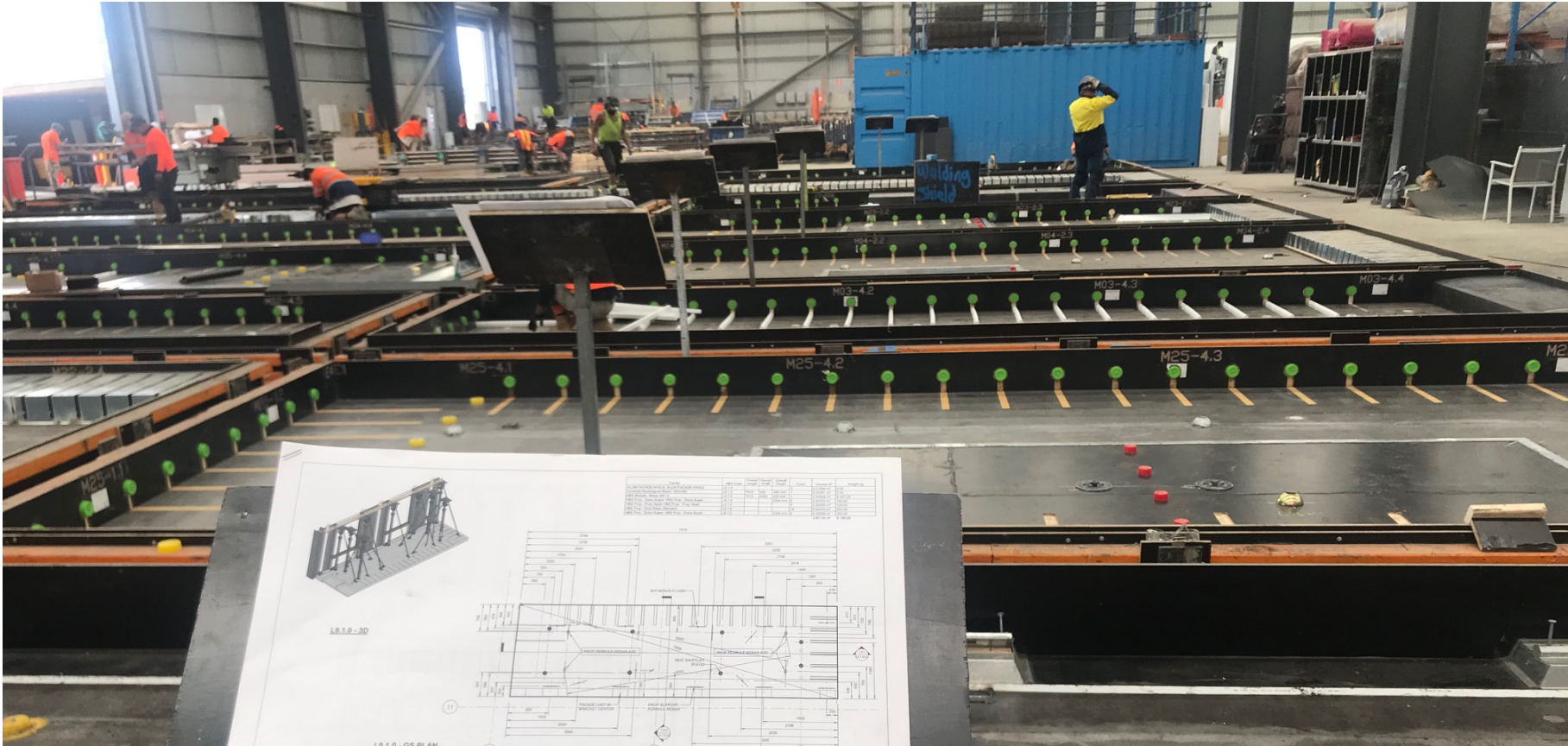




Sub assemblies



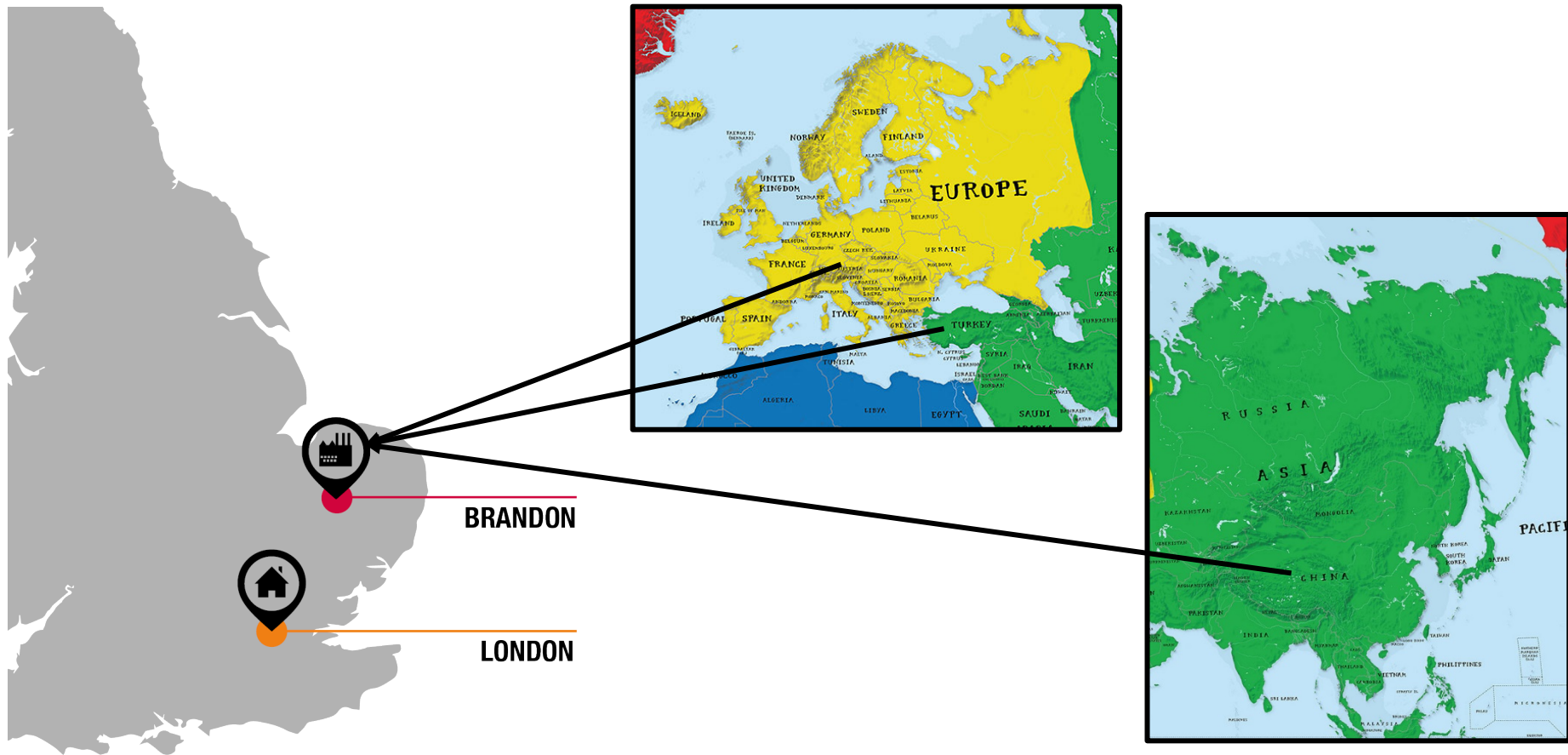




Façade and slab sub-Assembly



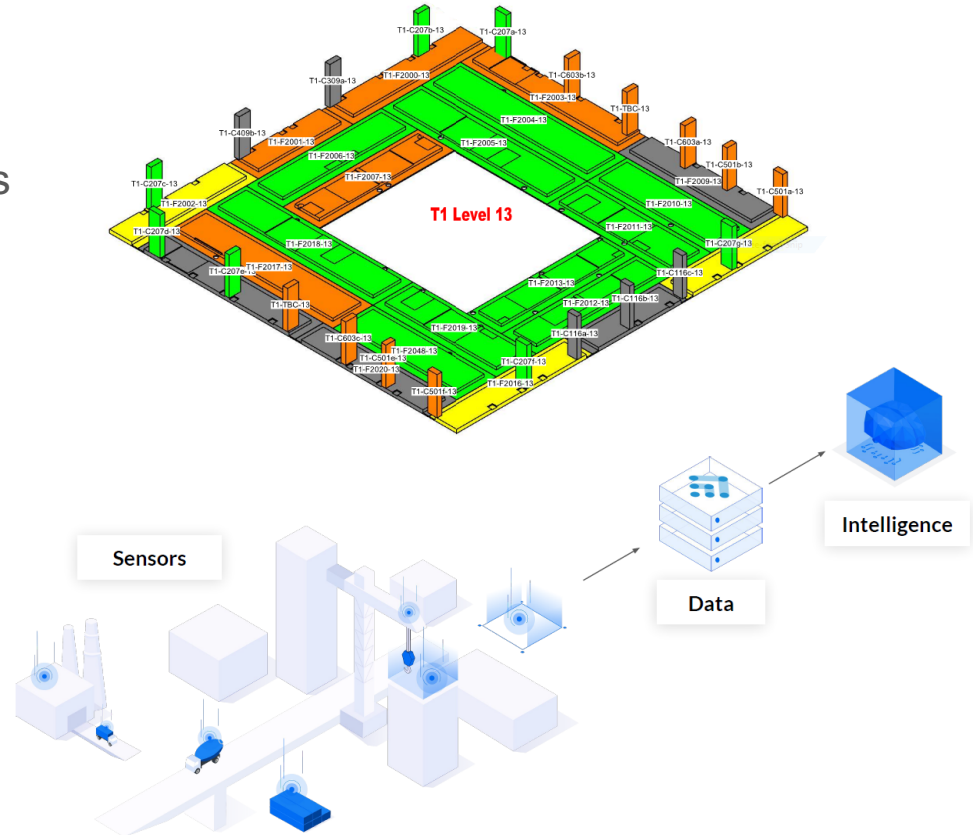
Façades





Tracking

- Monitoring all key sub-assemblies:
- Floor slabs
- Verticals; columns, core boxes, twin walls
- Stairs
- Façades
- Bathroom pods
- Utility cupboards
- Service risers
- Horizontal services distribution





Onsite installation





07:00

Wed 2 July



09:00

Wed 2 July

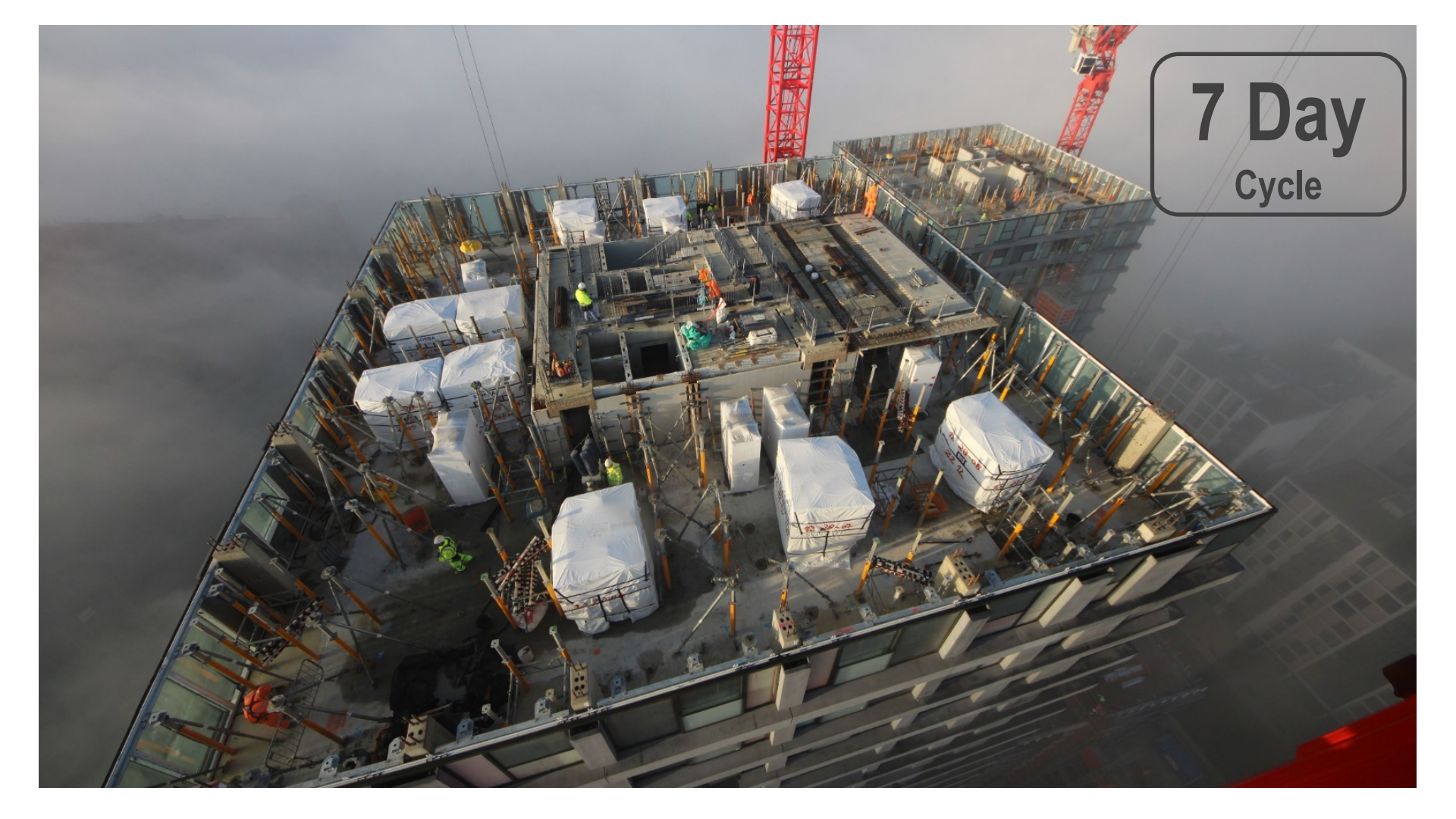


11:00
Wed 2 July



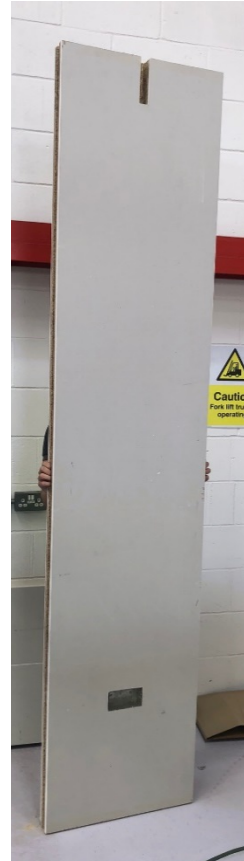
14:00

Wed 2 July

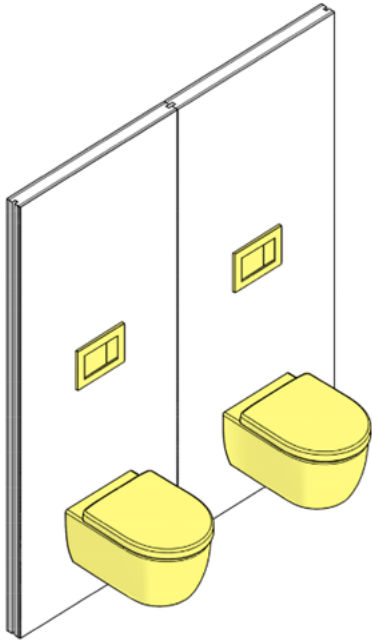
An aerial photograph of a high-rise building under construction. The building's floor slabs are visible, with several large rectangular areas covered in white plastic sheeting. Scaffolding and construction equipment are scattered across the site. Two red tower cranes are visible in the background against a hazy sky. In the bottom right corner, there is a red graphic element. A semi-transparent rounded rectangle in the top right corner contains the text "7 Day Cycle".

7 Day
Cycle

Fit Out Solutions – Pre Serviced Walls



Fit out solutions – Toilets, bathrooms and washrooms



Fit Out Solutions – Kitchen Modules



Key benefits



Consistent
Quality



Faster
25%



Better
tolerances



Safer



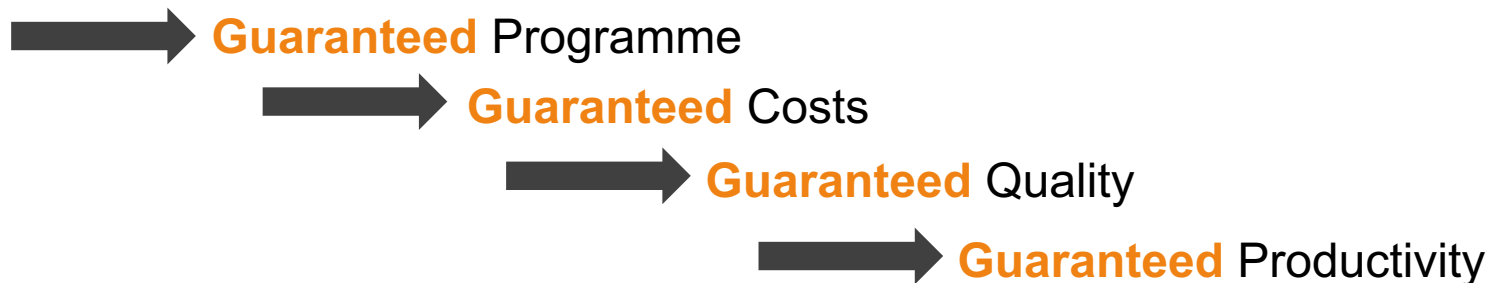
Less Waste
(70%)



Reduced
Deliveries
(40%)



Guaranteed Outcomes



Q&A
